

**Study of the genus *Telopes* Redtenbacher in Russegger, 1843 - Part 1.
Lectotype designation for *Telopes dispar* Redtenbacher, with descriptions of
four new species (Coleoptera: Dermestidae: Attageninae)**

Jiří HÁVA

Private Entomological Laboratory & Collection,
Rýznerova 37/37, CZ-252 62 Únětice u Prahy, Prague-west, Czech Republic
e-mail: jh.dermestidae@volny.cz; <https://orcid.org/0000-0001-8076-9538>

Taxonomy, lectotype, designation, new species, description, Coleoptera, Dermestidae, Attageninae, *Telopes*, Armenia, Greece, Israel, Jordan, Syria, Turkey

Abstract. The lectotype and paralectotypes for the species *Telopes dispar* Redtenbacher, 1843 are designated and illustrated. Four new species are described: *Telopes paradispar* sp. nov. (Turkey), *Telopes graecus* sp. nov. (Greece), *Telopes armeniacus* sp. nov. (Armenia), *Telopes israelicus* sp. nov. (Israel). The species *Telopes tessellatus* Reitter, 1887 is newly recorded from Iraq and Jordan.

INTRODUCTION

The genus *Telopes* Redtenbacher in Russegger, 1843 currently contains 17 species worldwide (Háva 2025). The genus is distributed in the western Palaearctic: Mediterranean subregion, and the Afrotropical region.

The genus was described by Redtenbacher (1843), Lacordaire (1854) mentioned it as synonym of *Attagenus*. Dalla Torre (1911) and Mroczkowski (1968) mentioned it as a subgenus of the genus *Attagenus* Latreille, 1802. Between 1968 and 2003, *Telopes* was classified by some authors as a separate genus or subgenus of the genus *Attagenus*. Háva (2003, 2007, 2015) mentioned it in synonymy of *Attagenus*. Háva (2021) newly reinstated it as a subgenus of *Attagenus* with description of a new species from Morocco. Zhou et al. (2022) stated it is an independent genus.

Taxonomic acts with the designation of lectotypes, descriptions of new species belonging to the genus *Telopes* were recently published by (Háva 2005, 2008a, b, 2021, 2022, Háva & Alonso-Zarazaga 2016).

The present article designates a lectotype and paralectotypes for *Telopes dispar* Redtenbacher, 1843. Additionally, four similar new species are described from Armenia, Greece, Israel and Turkey. Illustrations and comments are provided for the other species mentioned.

MATERIAL AND METHODS

The size of the beetle and of its body parts can be useful in species recognition, so the following measurements were made:

Total length (TL) - linear distance from anterior margin of pronotum to apex of elytra.

Elytral width (EW) - maximal linear transverse distance.

The type material is deposited in the following collections:

JHAC Jiří Háva, Private Entomological Laboratory & Collection, Únětice u Prahy, Prague-West, Czech Republic;

NHMW Naturhistorisches Museum, Wien, Austria;

NHRS Naturhistoriska Riksmuseet Stockholm, Sweden;

PZAC Petr Zahradník, private collection, Jesenice u Prahy, Czech Republic;

RSPC Rudolf Schuh, private collection, Katzelsdorf, Austria;

SDEI Senckenberg Deutsches Entomologisches Institut, Müncheberg, Germany.

RESULTS

Genus *Telopes* Redtenbacher in Russegger, 1843

Telopes dispar Redtenbacher in Russegger, 1843 (Figs. 1-8)

Telopes dispar Redtenbacher in Russegger, 1843: 984.
Attagenus redtenbacheri Peyron, 1857: 720.

Type material. 11 syntypes (co-types) (2 ♂♂, 9 ♀♀) labelled: Lectotype (♂): "Kotsch Li" / "Syrienn" / "CO-TYPUS" / "SYNTYPUS nr.1 V. Kalík det. 1988" / "Telopes dispar Rdt. Det. Kalík 1958" / "Lectotypus det. Kalík 1988" / [male genitalia is glued on separate label] "LECTOTYPE *Telopes dispar* Rdt. Jiří Háva des. 2025", (NHMW). Paralectotype 1 (♀): "Schm, Gobl" / "Syrien" / "CO-TYPUS" / "SYNTYPUS nr.2 V. Kalík det. 1988" / "Telopes dispar Rdt. Det. Kalík 1958" / "Paralectotypus det. Kalík 1988" / "PARALECTOTYPE *Telopes dispar* Rdt. Jiří Háva des. 2025", (NHMW). Paralectotype 2 (♂): "Kotsch h.141" / "CO-TYPUS" / "SYNTYPUS nr.3 V. Kalík det. 1988" / "Telopes dispar Rdt. Det. Kalík 1958" / "Cotypus nr. 1 det. Kalík 1958" / "Paralectotypus det. Kalík 1988" / "PARALECTOTYPE *Telopes dispar* Rdt. Jiří Háva des. 2025", (NHMW). Paralectotype 3 (♀): "Kotsch h" / "CO-TYPUS" / "SYNTYPUS nr.4 V. Kalík det. 1988" / "Telopes dispar Rdt. Det. Kalík 1958" / "Cotypus nr. 3 det. Kalík 1958" / "Paralectotypus det. Kalík 1988" / "PARALECTOTYPE *Telopes dispar* Rdt. Jiří Háva des. 2025", (NHMW). Paralectotype 4 (♀): "Schm Goebel" / "CO-TYPUS" / "SYNTYPUS nr.5 V. Kalík det. 1988" / "Telopes dispar Rdt. Det. Kalík 1958" / "Cotypus nr. 4 det. Kalík 1958" / "Paralectotypus det. Kalík 1988" / "PARALECTOTYPE *Telopes dispar* Rdt. Jiří Háva des. 2025", (NHMW). Paralectotype 5 (♂): "Kotsch h.141" / "CO-TYPUS" / "Telopes dispar Rdt. Det. Kalík 1958" / "Cotypus nr. 5 det. Kalík 1958" / "PARALECTOTYPE *Telopes dispar* Rdt. Jiří Háva des. 2025", (NHMW). Paralectotype 6 (♀): "Kotsch h." / "CO-TYPUS" / "Telopes dispar Rdt. Det. Kalík 1958" / "Cotypus nr. 2 det. Kalík 1958" / "PARALECTOTYPE *Telopes dispar* Rdt. Jiří Háva des. 2025", (NHMW). Paralectotype 7 (♀): "Kotsch h." / "CO-TYPUS" / "Telopes dispar Rdt. Det. Kalík 1958" / "Cotypus nr. 6 det. Kalík 1958" / "PARALECTOTYPE *Telopes dispar* Rdt. Jiří Háva des. 2025", (NHMW). Paralectotype 8 (♀): "Schm Goebel" / "CO-TYPUS" / "Telopes dispar Rdt. Det. Kalík 1958" / "Cotypus nr. 7 det. Kalík 1958" / "PARALECTOTYPE *Telopes dispar* Rdt. Jiří Háva des. 2025", (NHMW). Paralectotype 9 (♀): "Schm Goebel" / "CO-TYPUS" / "Telopes dispar Rdt. Det. Kalík 1958" / "Cotypus nr. 8 det. Kalík 1958" / "PARALECTOTYPE *Telopes dispar* Rdt. Jiří Háva des. 2025", (NHMW). Paralectotype 10 (♀): "Schm Goebel" / "CO-TYPUS" / "Telopes dispar Rdt. Det. Kalík 1958" / "Cotypus nr. 9 det. Kalík 1958" / "PARALECTOTYPE *Telopes dispar* Rdt. Jiří Háva des. 2025", (NHMW).

Additional material examined: Syria occ., Al Nasrah env., 300 m, 8-9.4.2005, St. Jakl lgt., 17 ♂♂, 2 ♀♀, J. Háva det., (JHAC); Syria, Massia - Mallula, 14.4.2005, R. Červenka lgt., 27 ♂♂, 10 ♀♀, J. Háva det., (JHAC); Syria, Bludan NW Damascus, 1400-1700 m, 4-5.5.2007, T. Tichý lgt., 1 ♂, J. Háva det., (JHAC); Turkey, Gaziantep, Sinan, 20.v.1993, P. Průdek lgt., 1 ♂, 1 ♀, J. Háva det., (JHAC); Turkey, Gaziantep, Hairat, 14.5.1983, leg. Wellschmied, 1 ♂, 1 ♀, J. Háva det., (JHAC); Turkey, Gaziantep env., 20.5.1993, Krátký lgt., 1 ♀, J. Háva det., (JHAC); "Syria, pr. Damascus, 3 km NE of Bloudan, 2009 m, 20.v.2007, I Rozner & Sz. Salvó lgt., 1 ♀, J. Háva det., (JHAC).

Redescription. Male. Body measurements (in mm): TL 3.7 mm, EW 2.2 mm; oblong-oval (Fig. 3), convex; dorsally brown and orange, ventrally unicolorously dark brown, matte; dorsum covered with long and recumbent, brown and white setation; thoracic underside with comparatively long and recumbent, white setation; visible abdominal ventrites with recumbent, white setation, sparser than that on thoracic surface.

Head coarsely punctured with long white setation. Palomeres narrow and long, dark brown. Frontal median ocellus present. Antennae black with dark brown setation, composed of 11 antennomeres, antennal club compact with 3 antennomeres (Fig. 4).

Pronotum dark brown, coarsely punctate on the disc and on lateral margins, covered by white and brown setation; brown setation discally forming spots. Hypomerone matte with small punctures.

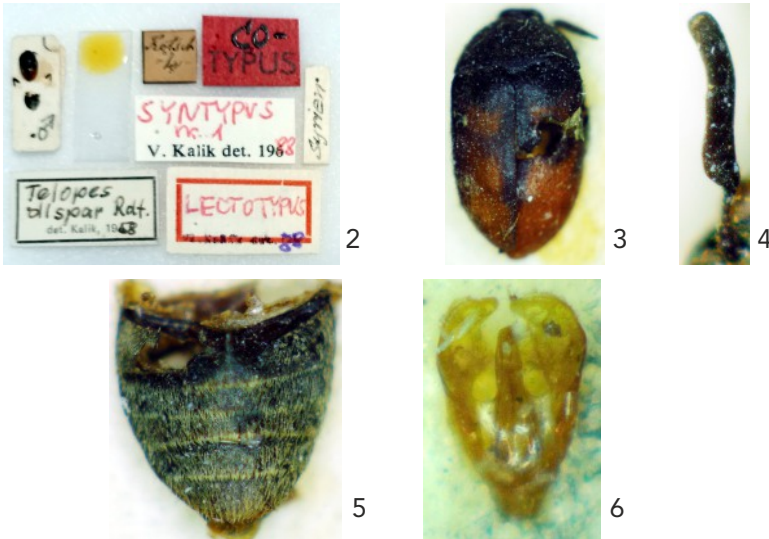
Scutellum black, small and triangular, matte, with rounded apex, without setation.

Elytra dark brown with orange part (Fig. 3), covered by brown and yellow setation; white setation covered by brown parts. Epipleuron dark brown, coarsely punctured, very short, with short white setae.

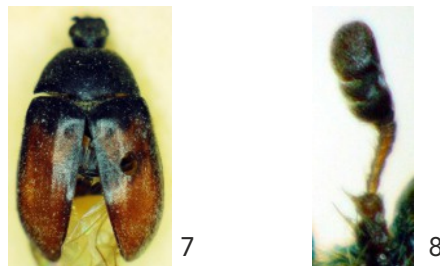
Prosternum without "collar," mouthparts free. Prosternal process black, short, narrow with yellow setation. Meta- and mesosternum dark brown, finely punctate discally, laterally coarsely punctate, with white, recumbent setation.



Fig. 1. Type series of *Telopes dispar* Redtenbacher in Russegger, 1843.



Figs. 2-6. *Telopes dispar* Redtenbacher in Russegger, 1843 (lectotype): 2- labels; 3- habitus, dorsal aspect; 4- antenna of male; 5- abdomen; 6- male genitalia.



Figs. 7-8. *Telopes dispar* Redtenbacher in Russegger, 1843 (paralectotype): 7- habitus, dorsal aspect; 8- antenna of female.

Abdomen black, with five visible abdominal ventrites, each ventrite laterally with small depressions, covered by recumbent, yellow setation.

Legs dark brown, covered with comparatively short and thick, white setation and with short, brown spines. Tarsi brown, moderately long.

Male genitalia as in (Fig. 6).

Female. Externally similar to the male, but differs by the structure of the antennae (Fig. 8). The orange part may occupy a larger part of the elytra (Fig. 7). Body measurements (in mm): TL 3.4-4.5 mm, EW 2.3-2.7 mm

Variability. Body measurements (in mm): TL 3.0-4.5 mm, EW 1.8-2.7 mm. The white setation may be widespread, and in extreme cases the elytra are covered except for small parts.

Distribution (corrected): eastern Turkey; north-western Iran; Syria.

Telopes paradispar sp. nov.

(Figs. 9-13)

Type material. Holotype (♂): "Turkey, Denizli vill., Pamukkale, Hierapolis" / "1984.v.5, fűhálózva, leg. Szalóki D." / "Attagenus dispar J. Háva det.", (JHAC). Paratypes: (4 ♂♂, 1 ♀): same data as holotype, (JHAC); (1 ♂): "Asia min., Izmir, Gümuldür, 5.65, Dr. Pfeffer lgt., (JHAC); (1 ♂): "Smyrna", (JHAC); (5 ♂♂, 5 ♀♀): "Turkey occ., Pamukale, 28.4.1992, Z. Malinka lgt., (4 ZMPC, 6 JHAC); (1 ♂, 1 ♀): "Turcia, Pamukale, 30.4.1991, T. Růžička lgt., (JHAC); (1 ♂): "Turkey, Izmir prov., Boz Daglan mts., 3 km S of Golcük G., ca 900 m, 6.v.2002, T. Růžička lgt., (JHAC); (3 ♂♂): "Turc. occ., Pergamon, 10.vi.93, K. Poláček lgt., (JHAC); (2 ♂♂, 11 ♀♀): "Turkiet, Pamukala, 18.maj.1974, T-E. Leiler", (12 NHRS, 1 JHAC); (2 ♂♂, 1 ♀): "Smyrna" [Turkey], (NHMW); (1 ♂): "Smyrna 15/4 63" / "Coll. Kraatz" / "Attagenus sp. nr. 19, det. V. Kalik 1954", (SDEI).

All the material mentioned was previously identified as *Telopes dispar* (Redtenbacher, 1843).

Specimens of the presently described species are provided with red, printed labels with text as follows: „HOLOTYPE (or PARATYPE) *Telopes paradispar* sp. nov. Jiří Háva det. 2025”.

Description. Male. Body measurements (in mm): TL 3.7 mm, EW 2.2 mm; oblong-oval (Fig. 9), convex; dorsally unicolorously black, ventrally unicolorously black, matte; dorsum covered with long and recumbent, brown and white setation; thoracic underside with comparatively long and recumbent, white setation; visible abdominal ventrites with recumbent, white setation, sparser than that on thoracic surface.

Head coarsely punctured with long white setation. Palpomeres narrow and long, dark brown. Frontal median ocellus present. Antennae black with dark brown setation, composed of 11 antennomeres, antennal club compact with 3 antennomeres (Fig. 10).

Pronotum black, coarsely punctate on the disc and on lateral margins, covered by white and brown setation; white setation discally forming two spots and along lateral parts narrow fasciae. Hypomeron matte with small punctures.

Scutellum black, small and triangular, matte, with rounded apex, without setation.

Elytra black, coarsely punctate on humeri and with one small humeral bump, other parts finely punctate, covered by brown and white setation; white setation forming on each elytron transverse, narrow fasciae (Fig. 9). Epipleuron black, coarsely punctured, very short, with short white setae.

Prosternum without "collar", mouthparts free. Prosternal process black, long, narrow with white setation. Meta- and mesosternum black, finely punctate discally, laterally coarsely punctate, with white, recumbent setation.

Abdomen (Fig. 12) black, with five visible abdominal ventrites, each ventrite laterally with small depressions, covered by recumbent, white setation.

Legs dark brown, covered with comparatively short and thick, white setation and with short, brown spines. Tarsi brown, moderately long.

Male genitalia as in (Fig. 13).

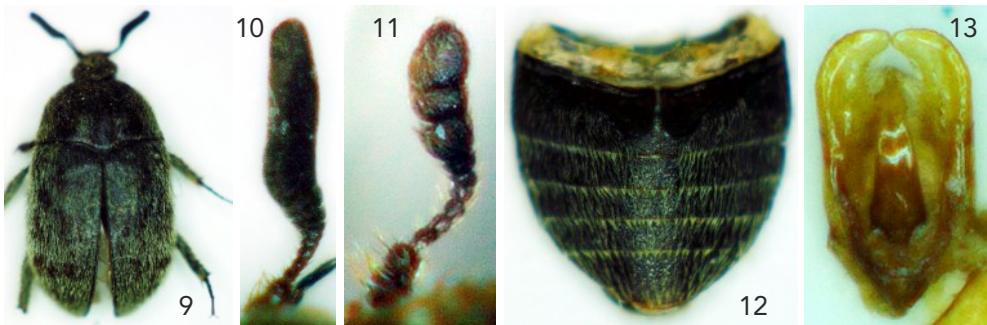
Female. Externally similar to the male, but differs of the structure of antennae (Fig. 11). Body measurements (in mm): TL 3.5-4.0 mm, EW 2.2-2.5 mm.

Variability. Elytral brown spots are variable in size. Body measurements (in mm): TL 3.5-4.0 mm, EW 2.2-2.5 mm.

Differential diagnosis. The new species differs from all species mentioned here by the unicolorous body, structure of antennae and male genitalia; by the same characters (antennae and male genitalia) differs from *T. undatus* (Fabricius, 1787) and *T. obtusus* (Gyllenhal in Schönherr, 1808).

Etymology. The new species was designated by Vladimír Kalík, who did but not describe it. So I will therefore use this name, „*paradispar*“.

Distribution: Turkey.



Figs. 9-13. *Telopes paradispar* sp. nov.: 9- habitus, dorsal aspect; 10- antenna of male; 11- antenna of female; 12- abdomen; 13- male genitalia.

***Telopes graecus* sp. nov.**
(Figs. 14-18)

Type material. Holotype (♂): "Graecia, Athen, Dr. Fodor" / "Cap Sunion 1932, Dr. Fodor, iv.17" / "Attagenus dispar J. Háva det.", (JHAC). Paratypes: (2 ♂♂): "Graecia, Attiki, Dr. Fodor" / "Ms. Parnis.Tatoi, Fodor, 1932.i.22", (JHAC); (2 ♂♂): "Graecia, Parnas, Arahova, 22.iv.1994, Dulík & Jeniš lgt.", (JHAC); (1 ♂, 1 ♀): "Greece, Gythion, 30.v.1991, Z. Švec lgt.", (JHAC); (23 ♂♂, 32 ♀♀): "Greece bor.or., Macedonia, Ampipoli, near of Strymon riv., 8-12.5.2011, Z. Malinka lgt., (12 ZMPC, 43 JHAC); (1 ♂): "Graecia, Gythion, 30.iv.1935, leg. Dr. J. Fodor", (JHAC); (1 ♂): "Graecia, Peloponnesos NW, Kalogria p. Metochi env., sandy dunes, pine forest, 21.iv.2008, S. Benedikt lgt., (JHAC); (2 ♀♀): "Graecia - S, Delphi, 9.5.2005, J. Halada lgt., (JHAC); (1 ♂): "Naxos, A.Schatzmayr, Coll. O. Leonhard" / "A. obtusus Gyll a. dispar Redt., Emm. Reitter", (JHAC); (1 ♂, 1 ♀): "Graecia, Lakonia, Ythion, 1935.iv.30, leg. Dr. J. Fodor", (JHAC, PZAC); "Griechenland, W. Kuhnelt, iv-v.1961" / "Gythion, Strand, 3.v.61", 1 ♀, J. Háva det., (NHMW); (3 ♀♀): "GR, Peloponnesos, Lakonia, 0.5 km S Skamnaki, 250 m, 36°43'32.3"N 22°27'20.1"E, 1.5.2013, R. Schuh lgt.", (RCPC).

All the material mentioned was previously identified as *Telopes dispar* (Redtenbacher, 1843).

Specimens of the presently described species are provided with red, printed labels with text as follows: „HOLOTYPE (or PARATYPE) *Telopes graecus* sp. nov. Jiří Háva det. 2025“.

Description. Male. Body measurements (in mm): TL 3.8 mm, EW 2.1 mm; oblong-oval (Fig. 14), convex; dorsally brown and orange-reddish, ventrally unicolorously black, matte; dorsum covered with long and recumbent, brown and white setation; thoracic underside with comparatively long and recumbent, white setation; visible abdominal ventrites with recumbent, white setation, sparser than that on thoracic surface.

Head coarsely punctured with long white setation. Palpomeres narrow and long, dark brown. Frontal median ocellus present. Antennae black with dark brown setation, composed of 11 antennomeres, antennal club compact with 3 antennomeres (Fig. 15).

Pronotum black, coarsely punctate on the disc and on lateral margins, covered by white and brown setation; white setation discally forming two spots and along lateral parts narrow fasciae. Hypomeron matte with small punctures.

Scutellum black, small and triangular, matte, with rounded apex, without setation.

Elytra brown, in anterior half with one narrow orange-reddish fascia, apical part orange-reddish, coarsely punctate on humeri and with one small humeral bump, other parts finely punctate, covered by brown and white setation; white setation on each elytron forming transverse, narrow fasciae (Fig. 14). Epipleuron brown, coarsely punctured, very short, with short white setae.

Prosternum without "collar", mouthparts free. Prosternal process black, long, narrow with white setation. Meta- and mesosternum black, finely punctate discally, laterally coarsely punctate, with white, recumbent setation.

Abdomen (Fig. 17) black, with five visible abdominal ventrites, each ventrite laterally with small depressions, covered by recumbent, white setation.

Legs dark brown, covered with comparatively short and thick, white setation and with short, brown spines. Tarsi brown, moderately long.

Male genitalia as in (Fig. 18).

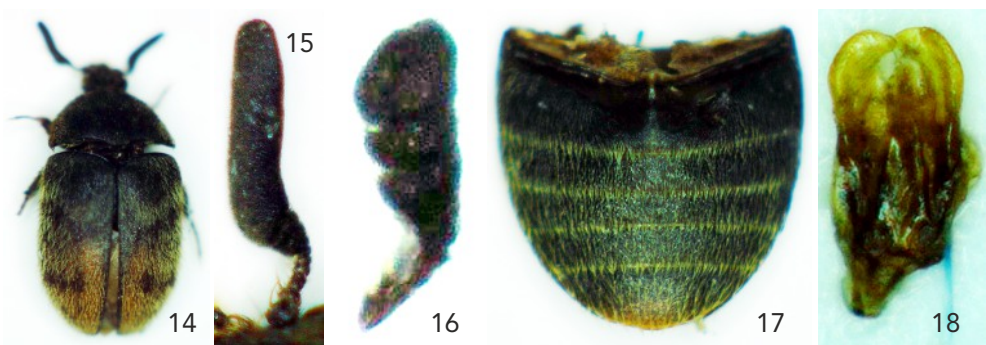
Female. Externally similar to the male, but differs by the structure of the antennae (Fig. 16). Orange part may occupy a larger part of the elytra. Body measurements (in mm): TL 4.0-4.5 mm, EW 2.4-2.7 mm.

Variability. White elytral fasciae are variable in size. Body measurements (in mm): TL 3.8-4.5 mm, EW 2.1-2.7 mm.

Differential diagnosis. The new species is externally similar to *Telopes armeniacus* sp. nov., but differs from it by the structure of the antennae and male genitalia.

Etymology. The new species was designated by Vladimír Kalík, who did but not describe it. So I will therefore use this name, „*graeus*“.

Distribution: Greece.



Figs. 14-18. *Telopes graecus* sp. nov.: 14- habitus, dorsal aspect; 15- antenna of male; 16- antenna of female; 17- abdomen; 18- male genitalia.

***Telopes armeniacus* sp. nov.**
(Figs. 19-23)

Type material. Holotype (♂): Armenia, Vaiotz Dzor pr., 2 km SE of Yeghnegadzor, alt 1130 m, 15-16.5.2016, 39°44'40.09"N 45°21'25.60"E, Petr Kresl lgt., (JHAC). Paratypes: (3 ♂♂, 1 ♀): same data as holotype, (JHAC); (1 ♀): "Armenia, 100 km S of Yerevan, Chorzov reserv., 6.7.2003, M. Múčka lgt., (JHAC).

All the material mentioned was previously identified as *Telopes dispar* (Redtenbacher, 1843).

Specimens of the presently described species are provided with red, printed labels with text as follows: „HOLOTYPE (or PARATYPE) *Telopes armeniacus* sp. nov. Jiří Háva det. 2025”.

Description. Male. Body measurements (in mm): TL 3.6 mm, EW 2.1 mm; oblong-oval (Fig. 19), convex; dorsally brown and orange-reddish, ventrally unicolorously black, matte; dorsum covered with long and recumbent, brown and white setation; thoracic underside with comparatively long and recumbent, white setation; visible abdominal ventrites with recumbent, white setation, sparser than that on thoracic surface.

Head coarsely punctured and with long brown setation. Palpomeres narrow and long, dark brown. Frontal median ocellus present. Antennae black with dark brown setation, composed of 11 antennomeres, antennal club compact with 3 antennomeres (Fig. 20).

Pronotum black, coarsely punctate on the disc and on lateral margins, covered by white and brown setation; brown setation discally forming large spot and along lateral parts circular spot. Hypomeron matte with small punctures.

Scutellum black, small and triangular, matte, with rounded apex, without setation.

Elytra brown, apical part orange-reddish, coarsely punctate on humeri and with one small humeral bump, other parts finely punctate, covered by brown and white setation; white setation forming on each elytron transverse, narrow fasciae (Fig. 19). Epipleuron brown, coarsely punctured, very short, with short white setae.

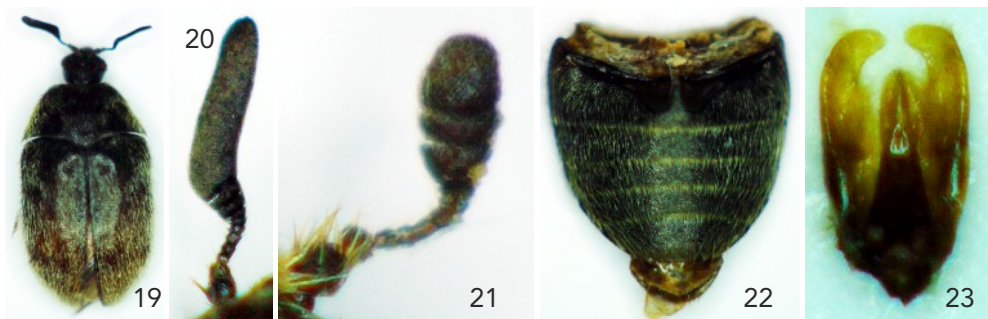
Prosternum without "collar", mouthparts free. Prosternal process black, long, broad with white setation. Meta- and mesosternum black, finely punctate discally, laterally coarsely punctate, with white, recumbent setation.

Abdomen (Fig. 22) black, with five visible abdominal ventrites, each ventrite laterally with small depressions, covered by recumbent, white setation.

Legs dark brown, covered with comparatively short and thick, white setation and with short, brown spines. Tarsi brown, moderately long.

Male genitalia as in (Fig. 23).

Female. Externally similar to the male, body measurements (in mm): TL 3.9-4.5 mm, EW 2.4-2.8 mm, but differs by the structure of the antennae (Fig. 21).



Figs. 19-23. *Telopes armeniacus* sp. nov.: 19- habitus, dorsal aspect; 20- antenna of male; 21- antenna of female; 22- abdomen; 23- male genitalia.

Variability. Body measurements (in mm): TL 3.5-4.2 mm, EW 2.2-2.5 mm.

Differential diagnosis. The new species is externally similar to *Telopes graecus* sp. nov., but differs from it by the structure of the antennae and male genitalia.

Etymology. Toponymic, named for the country of Armenia, where the types were collected.

Distribution: Armenia.

***Telopes israelicus* sp. nov.**
(Figs. 24-27)

Type material. Holotype (♂): "Israel SW, Beer Milka env., 2.5.2019, L. Černý lgt.", (JHAC). Paratype (1 ♂): same data as holotype, (JHAC); (2 ♂♂): "Israel, Nicanej Sinai, Khemin env., 1-2.5.2019, M. Šárovec lgt.", (JHAC). Specimens of the presently described species are provided with red, printed labels with text as follows: „HOLOTYPE (or PARATYPE) *Telopes israelicus* sp. nov. Jiří Háva det. 2025”.

Description. Male. Body measurements (in mm): TL 3.7 mm, EW 1.5 mm; oblong-oval (Fig. 24), convex; dorsally black and brown, ventrally unicolorously black, matte; dorsum covered with long and recumbent, brown and white setation; thoracic underside with comparatively long and recumbent, white setation; visible abdominal ventrites with recumbent, white setation, sparser than that on thoracic surface.

Head coarsely punctured with long white setation. Palpomeres narrow and long, dark brown. Frontal median ocellus present. Antennae dark brown with yellow setation, composed of 11 antennomeres, antennal club with 3 antennomeres (Fig. 25).

Pronotum black, coarsely punctate on the disc and on lateral margins, covered by white and brown setation; brown setation forming four spots. Hypomeron matte with small punctures.

Scutellum black, small and triangular, matte, with rounded apex, without setation.

Elytra brown with orange ornament, coarsely punctate on humeri and with one small humeral bump, other parts finely punctate, covered by brown and white setation; brown setation forming on each elytron transverse, narrow fasciae and spots (Fig. 24). Epipleuron black, coarsely punctured, very short, with short white setae.

Prosternum without "collar", mouthparts free. Prosternal process black, short, broad with long white setation. Meta- and mesosternum black, finely punctate discally, laterally coarsely punctate, with white, recumbent setation.

Abdomen (Fig. 26) black, with five visible abdominal ventrites, each ventrite laterally with small depressions, covered by recumbent, white setation.

Legs dark brown, covered with comparatively short and thick, yellow setation and with short, brown spines. Tarsi brown, moderately long.

Male genitalia as in (Fig. 27).

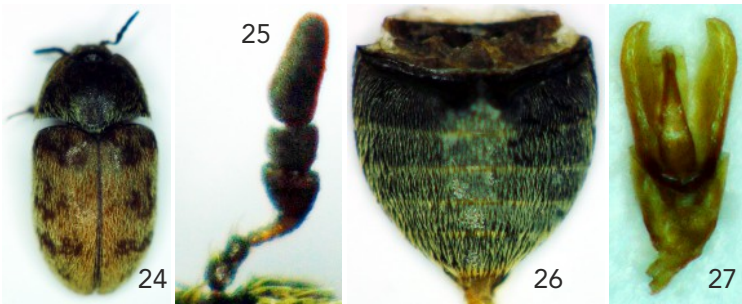
Female. Unknown.

Variability. Body measurements (in mm): TL 3.0-3.9 mm, EW 1.6-2.2 mm.

Differential diagnosis. The new species is similar to *Telopes tessellatus* Reitter, 1887 but differs from it by the arrangement of elytral fasciae and structure of the antennae and male genitalia.

Etymology. Toponymic, named after the country of Israel where the types were collected.

Distribution: Israel.



Figs. 24-27. *Telopes israelicus* sp. nov.: 24- habitus, dorsal aspect; 25- antenna of male; 26- abdomen; 27- male genitalia.

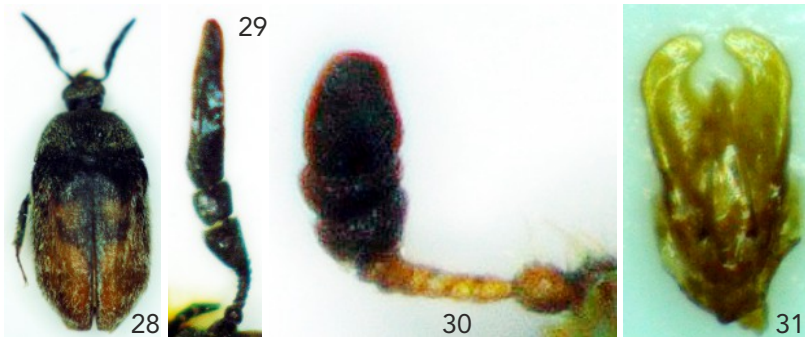
***Telopes tessellatus* Reitter, 1887**
(Figs. 28-31)

Telopes tessellatus Reitter, 1887: 54.

Selected material examined: Jordanien SW, Petra env., 18.4.2002, M. Snížek lgt., 1 ♀, J. Háva det., (JHAC); Jordanien N, Riv. Zarga vall., Gharisa, 26.4.2002, M. Snížek lgt., 2 ♀♀, J. Háva det., (JHAC); "Iraq, Ganra, 20-31.iii.1978, Kodym lgt., 2 ♂♂, J. Háva det., (JHAC); Syria m.occ., Anti-Lebanon mts., Bludan env., (NW Damascus), 1700 m, 4.v.2000, S. Benedikt lgt., 2 ♀♀, J. Háva det., (JHAC).

Other material examined: 64 spec. from Iraq, Jordan, Syria, Turkey, Saudi Arabia and Israel (incl. Palestine).

Distribution: Turkey; Egypt; Libya; Israel; Saudi Arabia; Syria (Háva 2025), new to Iraq and Jordan.



Figs. 28-31. *Telopes tessellatus* Reitter, 1887: 28- habitus, dorsal aspect; 29- antenna of male; 30- antenna of female; 31- male genitalia.

***Telopes curvicornis* (J. Sahlberg, 1913)**
(Figs. 32-34)

Telopes curvicornis (J. Sahlberg, 1913: 26).

Attagenus curvicornis: Háva, 2005: 345 (designation of lectotype).

Type material. Paralectotype (♂), (JHAC). See Háva (2005).

Additional material examined: "Cairo" / "coll. Reitter" / „Attagenus Tel. Sp. nr. 110, VI. Kalík det. 60", 1 ♀, J. Háva det., (JHAC).

Distribution: Egypt (Háva 2025).



Figs. 32-34. *Telopes curvicornis* J. Sahlberg, 1913 (paralectotype): 32- habitus, dorsal aspect; 33- antenna of male; 34- male genitalia.

ACKNOWLEDGEMENTS. I am very indebted to Matthias Seidel (NHMW) for loaning me the co-type material and to Larry G. Beznak (California, U.S.A.) for the comments and English revision to the manuscript.

REFERENCES

- DALLA TORRE K. W. 1911: Coleopterorum Catalogus. Pars 33: Nosodendridae, Byrrhidae, Dermestidae. In: JUNK W. & SCHENKLING S. (eds): *Coleopterorum Catalogus*. Berlin: W. Junk, 96 pp.
- HÁVA J. 2003: World Catalogue of the Dermestidae (Coleoptera). *Studie a Zprávy Oblastního Muzea Praha-východ v Brandýse nad Labem a Staré Boleslavi*, Supplementum 1: 1-196.
- HÁVA J. 2005: New synonyms, lectotype designations, and new records in Dermestidae (Coleoptera: Bostrichidae). *Genus* 16: 341-347.
- HÁVA J. 2007: Dermestidae pp. 57, 299-320. In: LÖBLI. & SMETANA A. (eds.): *Catalogue of Palaearctic Coleoptera. Volume 4. Elateroidea - Derodontoidea - Bostrichoidea - Lymexyloidea - Cleroidea - Cucujoidea*. Stenstrup: Apollo Books, 935 pp.
- HÁVA J. 2008a: New taxonomical changes in the family Dermestidae (Coleoptera). *Heteropterus Revista de Entomologia* 8: 43-45.
- HÁVA J. 2008b: Dermestidae (Coleoptera) from the collection of the Czech entomologist Aldo Olexa. Part 3 - Attagenini, Megatomini. *Baltic Journal of Coleopterology* 8: 115-123.
- HÁVA J. 2015: *World Catalogue of Insects. Volume 13. Dermestidae (Coleoptera)*. Leiden/Boston: Brill, xxvi + 419 pp.
- HÁVA J. 2021: A new *Attagenus* Latreille, 1802 species from Morocco with reinstatement of the subgenus *Telopes* Redtenbacher in Russegger, 1843 (Coleoptera, Dermestidae, Attageninae). *Linzer Biologische Beiträge* 52(2): 987-992.
- HÁVA J. 2022: Descriptions of thirteen new *Attagenus* species from Afrotropical Region (Coleoptera: Dermestidae: Attageninae). *Folia Heyrovskyana, Series A* 29(2): 7-24.
- HÁVA J. 2025: *World Catalogue of the Dermestidae (Coleoptera)*. Únětice/Praha: Private Entomological Laboratory and Collection, 368 pp., ISBN 978-80-11-04238-7
- HÁVA J. & ALONSO-ZARAZAGA M. A. 2016: *Bruchus undatus* (Fabricius, 1787), a member of the genus *Attagenus* Latreille, 1802 (Coleoptera: Dermestidae: Attageninae). *Studies and Reports, Taxonomical Series* 12(1): 79-82.
- LACORDAIRE T. 1854: *Histoire Naturelle des Insectes. Genera des Coléoptères ou Exposé Méthodique et Critique de Tous Les Genres Proposés Jusqu'ici dans cet ordre d'Insectes. Tome deuxième contenant les familles des Paussides, Staphyliniens, Psélaphiens, Scydménides, Silphales, Sphériens, Trichoptérogens, Scaphidiles, Histériens, Phalacrides, Nitidulaires, Trogoitaires, Colydiens, Rhysodides, Cucujipes, Cryptophagides, Lathridiens, Mycétophagides, Thorictides, Dermestins, Byrrhiens, Géoryssins, Parnides, Hétérocérides*. Paris: Librairie Encyclopédique de Roret, 548 pp.
- MROČKOWSKI M. 1968: Distribution of the Dermestidae (Coleoptera) of the world with a catalogue of all known species. *Annales Zoologici* 26: 15-191.
- MULSANT E. & REY C. 1868: *Histoire Naturelle des Coléoptères de France. Tribu des Scuticolles*. Paris: F. Savy, (1867), 186 pp., 3 pls. [reprint from *Annales de la Société Linnéenne de Lyon* (N. S.) 15: 1-188, 3 pls.]
- PEYRON E. 1857: Description de quelques Coléoptères nouveaux et observations diverses. *Annales de la Société Entomologique de France* 5: 715-723.
- REDTENBACHER L. 1843: Coleopterorum Syriae genera et species novae. Pp. 971-990. In: RUSSEGGER J.: *Reisen in Europa, Asien und Afrika, mit besonderer Rücksicht auf die naturwissenschaftlichen Verhältnisse der betreffenden Länder, unternommen in den Jahren 1835 bis 1841. Erster Band. Reise in Griechenland, Unteregypten, im nördlichen Syrien und Kleinasien, mit besonderer Rücksicht auf die naturwissenschaftlichen Verhältnisse der betreffenden Länder, unternommen in dem 1836. Zweiter Theil*. Stuttgart: E. Schweizerbart'sche Verlagshandlung.
- REITTER E. 1887: *Bestimmungs-Tabellen der europäischen Coleopteren. III Heft. II. Auflage. Enthaltend die Familien: Scaphidiidae, Lathridiidae und Dermestidae*. Mödling: Verlag von Edmund Reitter, (1886), 75 pp.

- SAHLBERG J. R. 1913: *Coleoptera mediterranea et rosso-asiatica nova et cognita maxima ex parte itineribus annis 1895-1896, 1898-1899 et 1903-1904 collecta*. Öfversigt Finska Vetenskaps-Societetens Förhandlingar, Helsingfors 55A, No. 8, 88 pp.
- ZHOU YU-L., NICHOLLS J. A., LIU Z-H., HARTLEY D., SZITO A., ŚLPIŃSKI A. & ZWICK A. 2022: Molecular phylogeny of Dermestidae (Coleoptera) reveals the polyphyletic nature of *Trogoderma* Latreille and the taxonomic placement of the khapra beetle *Trogoderma granarium* Everts. *Insect Systematics and Diversity* 6(6): 1-24.

Published: 28. 11. 2025