

***Orphinus (Orphinus) viktorai* sp. nov.,
a new beetle species from Malaysia
(Coleoptera: Dermestidae: Megatominae)**

Andreas HERRMANN¹⁾ & Jiří HÁVA²⁾

¹⁾Bremervörder Straße 123, 21682 Stade, Germany
e-mail: herrmann@coleopterologie.de

²⁾Department of Forest Protection and Entomology,
Faculty of Forestry and Wood Sciences, Czech University of Life Sciences,
Kamýcká 1176, CZ-165 21, Praha 6 - Suchbátka, Czech Republic
e-mail: jh.dermestidae@volny.cz

Taxonomy, new species, Coleoptera, Dermestidae, *Orphinus*, Malaysia

Abstract. *Orphinus (Orphinus) viktorai* sp. nov. from Malaysia is described, illustrated and compared with the similar species *Orphinus (Orphinus) jurciceki* Háva, 2013, *Orphinus (Orphinus) notaticollis* Pic, 1916 and *Orphinus (Orphinus) atrofasciatus* Pic, 1916.

INTRODUCTION

When identifying some exotic dermestids from Malaysia sent to the authors of the present paper a so far undescribed species of the genus *Orphinus* Motschulsky, 1858 belonging to the subgenus *Orphinus* s. str. was detected. The genus *Orphinus* Motschulsky, 1858 includes nearly 100 valid species worldwide, a majority of them being members of the subgenus *Orphinus (Orphinus)* (Háva 2015a, b, c). Although the genus is spread mainly in Asia so far only one of its species, *Orphinus (Orphinus) jurciceki* Háva, 2013 has been recently described from Malaysia. *Orphinus viktorai* sp. nov. now becomes a second species of this genus, as well as of the subgenus, belonging to the fauna of Malaysia.

MATERIAL AND METHODS

All specimens were glued onto cardboard plates, the genitalia were extracted and embedded in a mixture of polyvinylpyrrolidone, diglycerine and water. The abdomen was disconnected from the body and glued upside down behind the specimen on the same cardboard plate.

Abbreviations of collections:

AHEC Private collection of Andreas Herrmann, Stade, Germany;

JHAC Private Entomological Laboratory & Collection, Jiří Háva, Praha-západ, Czech Republic.

The following abbreviations of measurements were used:

total length (TL) - linear distance from anterior margin of pronotum to apex of elytra.

pronotal length (PL) - maximum length measured from anterior margin to posterior margin of the pronotum.

pronotal width (PW) - maximum linear distance between lateral margins.

elytral length (EL) - linear distance from shoulder to apex of elytron.

elytral width (EW) - maximum linear transverse distance.

The type specimens are provided each with a red, printed label showing the text: „HOLOTYPE [respectively PARATYPE] *Orphinus (O.) viktorai* sp. n., A. Herrmann & J. Háva det. 2015”.

DESCRIPTION

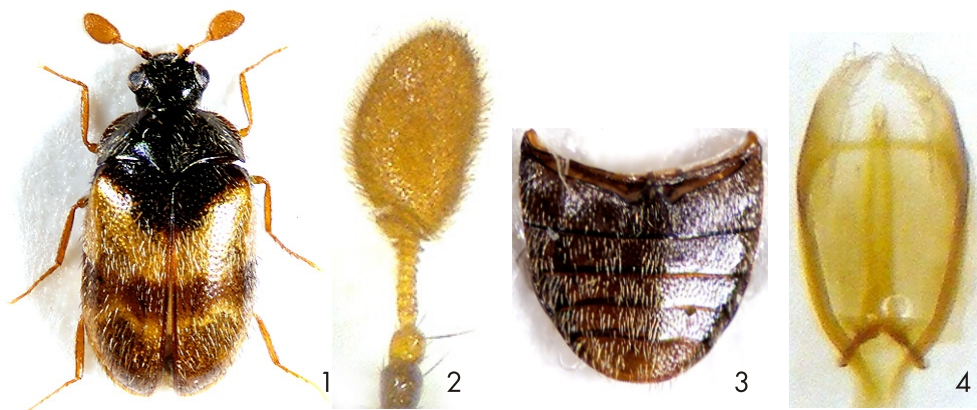
Orphinus (Orphinus) viktorai sp. nov.

(Figs. 1-4)

Type material. Holotype (♂): "W.-Malaysia, Pahang, Cameron Highlands, 1999.03.31 Bringchang, leg. W. Suppantchitsch", (AHEC). Paratypes: (8 ♀♀): Malaysia NW, Pahang, Cameron Highlands, Tanah Rata, 16-19.1.2006, P. Viktora lgt., (JHAC); (1 ♂): Malaysia, Pahang, Cameron Highlands, Tanah Rata, 1600 m, 11-27.2.2000, J. Horák lgt., (JHAC).

Description. Body measurements (in mm): TL 1.9, PL 0.5, PW 1.0, EL 1.5, EW 1.1. Body longish oval, dorsal surface coloured in black and orange, covered very sparsely with long bright setation (Fig. 1). Head shiny black, somewhat broader than long, with sparse, but distinct punctuation, on the frons with a few suberect long bright setation. Eyes large with some hardly visible microsetae. Palpi light brown, ocellus present on front. Antenna with 11 antennomeres; the antennal club longish ovate and entirely light brown, the extremely big last segment nearly as long as the whole shaft, all segments covered with distinct and erect setation. Each antennomere of the shaft seems to be naked, but is provided with a very few strong and erect setae, yellowish brown, the first (basal) segment darkened (Fig. 2). Pronotum shiny black, sparsely and finely punctuated, covered with a few bright, quite long and suberect setae, which are concentrated mainly towards the lateral margins. Much broader than long, narrowed anteriorly, from the middle to the apical end nearly parallel, its lateral margins visible from above; posterior and especially anterior angles somewhat rounded. Elytra with distinct punctuation, the puncture is sparse and coarse; setation as in the pronotum; cuticle more or less shiny and black except two yellow transverse fasciae. The first starts in the middle of the elytra and reaches the shoulder, whilst the second one is located in the second third; both of them reach the elytral margin. Furthermore the margins are yellow in the whole apical half of the elytra (Fig. 1). Scutellum very small and roughly triangular, with the same punctures and setation as in the elytra. Punctuation and setation of the underside similar to the elytra, entirely black except the visible abdominal sternites which have dense punctuation and are covered by recumbent light brown setation (Fig. 3). Legs and tarsi entirely light brown, tibiae each with a row of a few brown short and erect setae on their edges. Tibiae of the middle and hind legs roughly as long as the tarsi. Genitalia as shown in Fig. 4).

Female externally similar to male, but terminal antennomere is small and more circular.



Figs. 1-4. *Orphinus viktorai* sp. nov. (holotype, male): 1- habitus, dorsal aspect; 2- antenna; 3- abdomen, ventral aspect; 4- genitalia, ventral aspect.

Variability. Variation in size (in mm): TL 1.7-2.4, EW 1.1-1.3.

Differential diagnosis. The new species is very similar to the following three *Orphinus* species, but it differs from them as follows:

Orphinus atrofasciatus Pic, 1916: dark elytral transverse fascia reaching from suture to lateral part; pronotum without dark discal spot.

Orphinus notaticollis Pic, 1916: dark elytral transverse fascia not reaching from suture to lateral part; pronotum with dark discal spot.

Orphinus jurciceki Háva, 2013: elytral cuticle dark-brown with one transverse orange-reddish fascia not reaching suture and orange-reddish apical part, pronotum orange-reddish, with large discal black area.

Orphinus viktorai sp. nov.: elytral cuticle more or less shiny and black except two yellow transverse fasciae (Fig. 1); pronotum shiny black (Fig. 1).

Name derivation. The name is dedicated to Petr Viktora (Kutná Hora, Czech Republic), specialist in Cerambycidae (Coleoptera).

ACKNOWLEDGEMENTS. We are deeply indebted to all collectors for providing the interested material.

REFERENCES

- HÁVA J. 2015a: *World Catalogue of Insects. Volume 13. Dermestidae (Coleoptera)*. Leiden/Boston: Brill, xxvi + 419 pp.
- HÁVA J. 2015b: Three new species of *Orphinus* Motschulsky, 1858 from Thailand (Coleoptera: Dermestidae: Megatominae). *Archivos Entomológicos* 13: 225-229.
- HÁVA J. 2015c: A contribution to knowledge of the genus *Orphinus* Motschulsky, 1858 from the Philippines (Coleoptera: Dermestidae: Megatominae). *Folia Heyrovskyana, Series (A)* (2014), 22 (2): 1-8.